



PLS

HTE COPPER FOIL



Characteristic

- Single side treated copper foil



Application

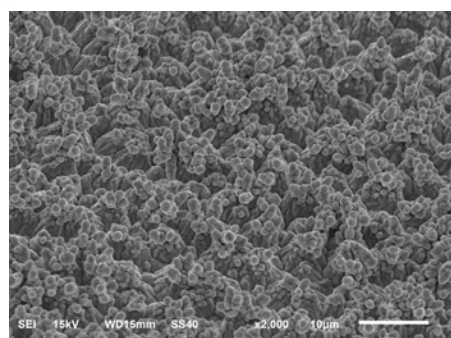
- Glass Fiber Copper Clad Laminate (FR-4, Halogen free, High Tg)



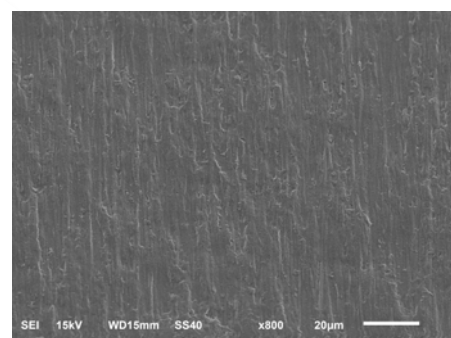
Specification

Thickness			12 μm	18 μm	35 μm	70 μm	105 μm
Thickness by weight		g/m ²	107±5	153±8	285±10	580±30	880±40
Copper purity		%	≥99.80	≥99.80	≥99.80	≥99.80	≥99.80
Tensile strength	at 23°C	kg/mm ²	≥21	≥21	≥28	≥28	≥28
	at 180°C	kg/mm ²	≥15	≥15	≥15	≥15	≥15
Elongation	at 23°C	%	≥3	≥4	≥5	≥5	≥5
	at 180°C	%	≥2	≥3	≥3	≥3	≥3
Shiny side Ra		μm	≤0.43	≤0.43	≤0.43	≤0.43	≤0.43
Matte side Rz		μm	≤7.0	≤8.0	≤10.0	≤14.0	≤14.0
Peel strength		kg/cm	≥1.1	≥1.3	≥1.7	≥1.9	≥2.0
		lb/in	≥6.0	≥7.3	≥9.5	≥10.6	≥11.2

Matte side SEM (X2000)



Shiny side SEM (X800)



If you have any special property requirement, please feel free to contact with CCP sales team.
 Test method was according to IPC-TM-650. Roughness was measured according to JIS94 specification.
 Peeling strength was tested based on standard FR-4 prepreg (7628 Prepreg x 6 pcs).

CHANG CHUN PETROCHEMICAL CO., LTD.

7F., No. 301, Songjiang Rd., Zhongshan Dist., Taipei City 10483, Taiwan

Tel: +886-2-2500-1800 Fax: +886-2-2501-8018 Web Site: www.ccpgp.com



2022.08 VER. 4.0